

Degrees Transition

PRODUCT SPECIFICATION SHEET

| Face Construction | Metric | Imperial | Procedure |
|---------------------|-------------------------|--------------------------|------------|
| Construction | Patterned Loop | | |
| Fiber System | 100% Nylon | | |
| Dye Method | Solution Dyed | | |
| Gauge | 39.4 rows/10cm | 1/10 | |
| Stitches per inch | 40.0 stitches/10cm | 10.2 stitches/inch | ASTM D-418 |
| Pile Height Average | 4.0 mm | 0.157 inch | ASTM D-418 |
| Density Factor | 233.2 kg/m ³ | 6,304 oz/yd ³ | UM44D |

Product Testing Information

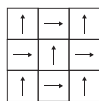
| | | | |
|--------------------------|--|----------------------------|-------------|
| Indoor Air Quality | All Tandus Flooring products comply with CRI Green Label Plus Standards ID: #GLP5288. Passes GB 18587-2001 | | |
| Surface Flammability | Passes CPSC FF 1-70 | | ASTM D-2859 |
| Flooring Radiant Panel | Class I (Mean average CRF: 0.45 watts/cm ² or higher) | | ASTM E-648 |
| Electrostatic Propensity | 3.0 kV or lower | Permanent Conductive Fiber | AATCC 134 |
| Colourfastness to Light | ≥ 4 after 100 hours | | AATCC 16E |

Backing System

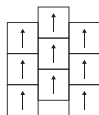
| | |
|------------------------------|--|
| Standard Backing | Tandus ECOPLY™ PVC Backing |
| Backing Customization Option | Tandus ECOBOND™ PVC Backing / EcoBase Backing (non-PVC) |
| Recycled Content | Tandus ECOBOND™ contains a minimum of 35% overall recycled content |
| Recycling | Recycling 100% recyclable when recovered |
| Standard Product Size | 250 mm x 1000 mm; 500mm x 500mm |

Product Notes

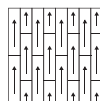
- Product specifications are derived from averages resulting from normal manufacturing tolerances in yarn, fiber, temperature, humidity and colour. Product specifications may vary within normal industry and standardised testing tolerances.
- These specifications reflect mean averages based upon tests of production runs of this carpet style by independent laboratories. A range of variances is implicit in the testing process. Furthermore, the standard test methods established to derive the specifications lack a degree of precision and repeatability; therefore, individual test results on the actual carpet purchased may differ from the specifications above.
- Colours may vary slightly from dye lot to dye lot.
- Backing or other materials may be changed without prior notice when shortages occur or when technological advancements become available which provide for improvement of the product's performance.
- All Tandus Flooring products are 100% recyclable.



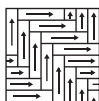
QUATER
TURN



VERTICAL
ASHLAR



VERTICAL
ASHLAR



HERRING
BONE

